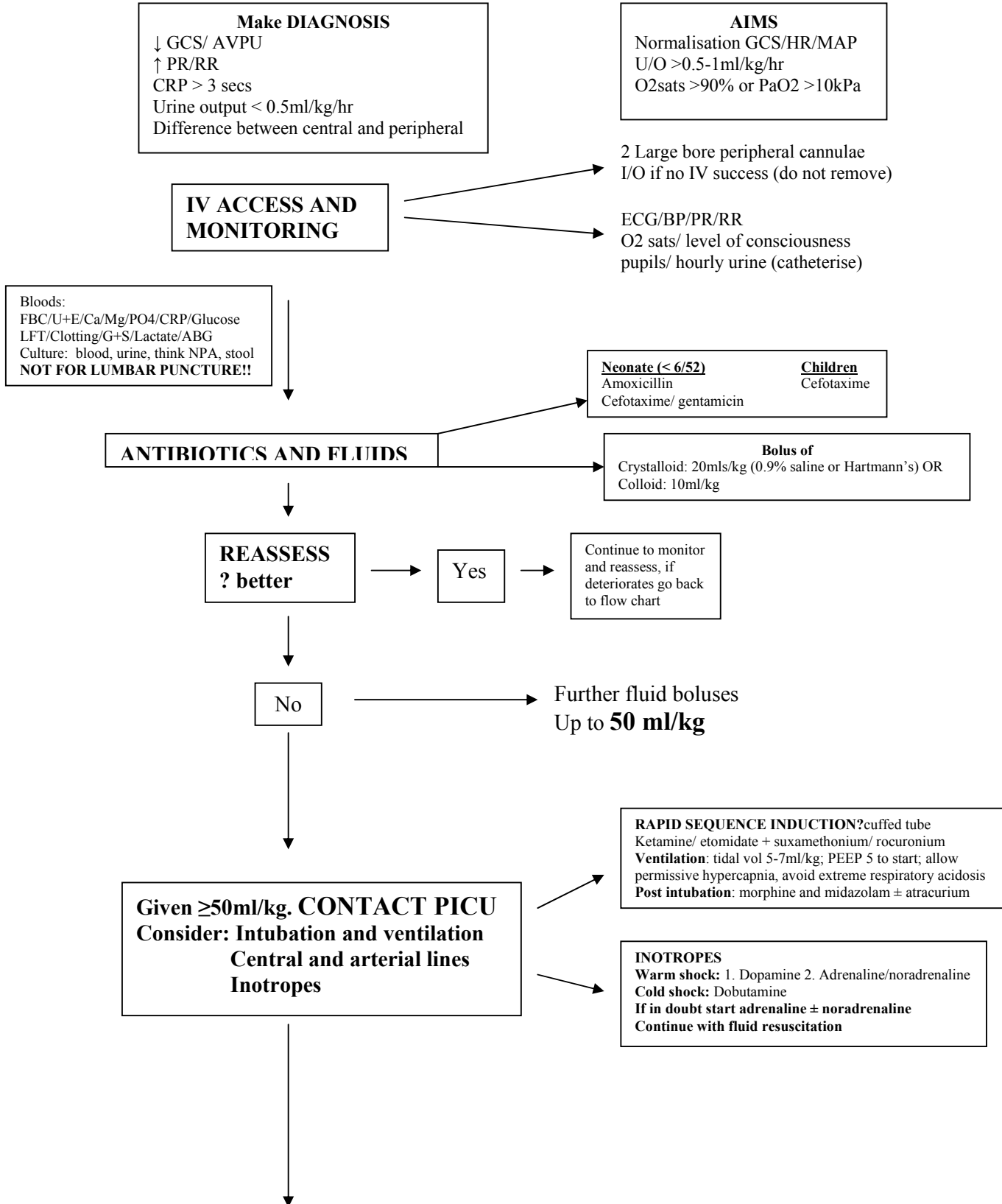
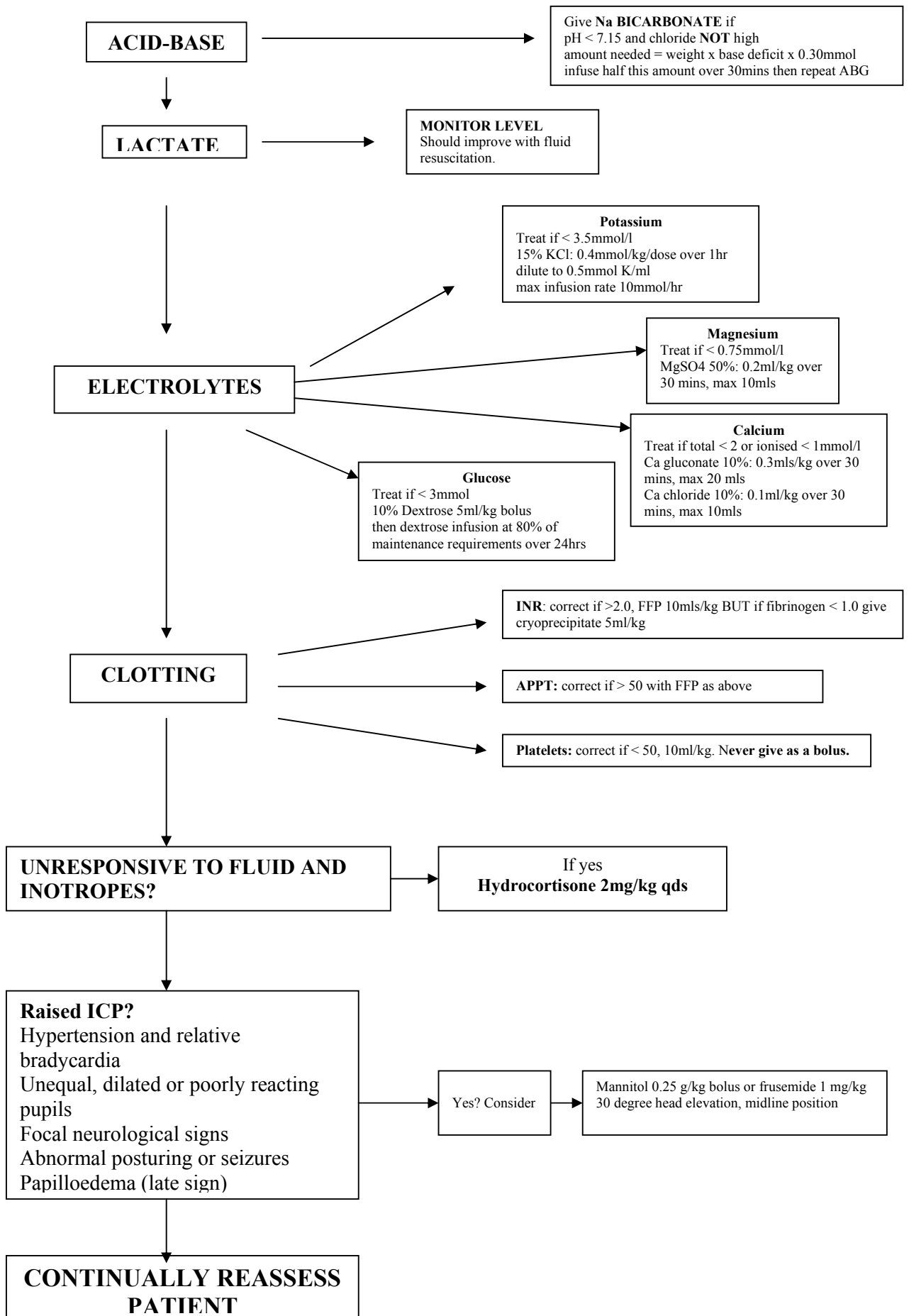


Flow Chart for Management of patients with SEPTIC SHOCK

(Drug doses at end of chart)





Drug Doses

Antibiotics:

Neonates (less than 6/52): amoxicillin (to cover Listeria) and cefotaxime or gentamicin

-cefotaxime: 50 mg/kg: < 7/7 old 12 hrly; 7-21/7 old 8 hrly; 21-28/7 old 6-8 hrly

-amoxicillin: < 7/7 old 100 mg/kg 12 hrly; 7-28/7 old 100 mg/kg 8 hrly; > 1/12 50 mg/kg 4-6 hrly (max 2 g/4hrs)

-gentamicin: 2.5 mg/kg: for premature babies: <29/40 - per 24hrs, 29-35/40 - per 18hrs, >35/40 12hrly.
>1/12 – 12yr: 2.5 mg/kg 8hrly

Older children (> 6/52): cefotaxime- 50mg/kg (max 12g daily) 6hrly

Inotropes:

Adrenaline 0.05-1 mcg/kg/min (0.3 x wt in kg = no. of mg to be added to 5 or 10%Dextrose to make up to 50mls, 1ml/hr = 0.1mcg/kg/min).

Dobutamine 2.5-20 mcg/kg/min (made up as dopamine).

Dopamine 2-20 mcg/kg/min (30 x wt in kg = no. mg to be added to 5 or 10% Dextrose to make up to 50mls, 1ml/hr = 10mcg/kg/min).

Noradrenaline 0.05-1 mcg/kg/min (made up as adrenaline).

Intubation

Etomidate: 0.2 – 0.3 mg/kg iv

Ketamine: 1 – 4.5 mg/kg iv

Suxamethonium: 1 – 2 mg/kg iv

Rocuronium: 0.6 mg/kg iv

Sedation post intubation

Midazolam: 6 x wt (kg) = no. of mg to be added to 5 or 10%Dextrose to make a total volume of 50mls. 1ml/hr = 2mcg/kg/hr, run at 1-6 mcg/kg/min.

Morphine: 1 x wt (kg) = no. of mg to be added to 5 or 10% Dextrose to make a volume of 50mls. 1ml/hr = 20mcg/kg/hr, run at 10-40 mcg/kg/hr.

Paralysis

Atracurium: 10mg/ml (neat), run at 0.5-1 mg/kg/hr.